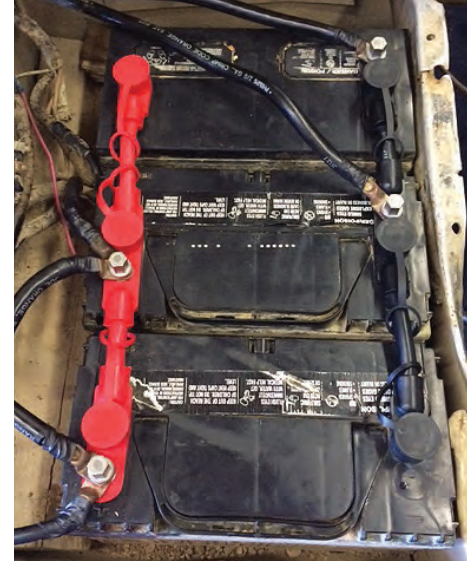


# IN FOCUS: Overmolded Cable Assemblies and Accessories

Battery systems can be extremely hard to maintain and service without having the right connections. Our Overmolded Cable Assemblies streamline battery connections with a secure and safe fit. Exposed connections are significantly reduced to minimize the formation of corrosion. Accessories complement our cable assemblies to help further service battery connection needs.



Before



After



## Group 31 Multi-Battery Overmolded Cable Assembly

- Made with 2/0 PVC starter cable
- Attached protective caps to seal connection
- Fits up to 3/8" stud

**2-Battery, Red, 7", 04362**

**2-Battery, Black, 7", 04363**

**3-Battery, Red, 14", 04364**

**3-Battery, Black, 14", 04365**

**4-Battery, Red, 21", 04662**

**4-Battery, Black, 21", 04663**

## Group 31 Battery Cable Splice Repair Harnesses

**SS 04957** Top Post

**SS 04958** Commercial Stud

**SS 04963** Commercial Overmolded Stud



## Group 31 Closed Top Nuts

**97435** bag of 25

**08577** card of 1

- 3/8" - 16 unc thread and 9/16" hex head
- Stainless steel sintered material
- Fits Group 31 overmolded cable assemblies



## Protective Stud Caps, Red

**04892** bag of 10

- Fits 3/8" stud
- Helps protect against corrosion
- Fits Group 31 overmolded cable assemblies



## Protective Stud Caps, Black

**04893** bag of 10

- Fits 3/8" stud
- Helps protect against corrosion
- Fits Group 31 overmolded cable assemblies

