

Battery Terminal Protection from Corrosion

Terminal Protectors

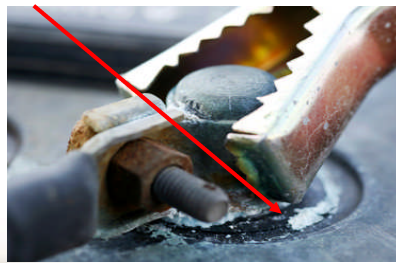
As vehicle owners hold onto their cars longer, and electrical systems are continuing to evolve with greater complexity, *prevention of battery corrosion at the terminal connection is key.*

Corrosion free terminals allow the vehicle engine management systems to perform as they were intended.



O'Reilly's Part #01396

Terminal corrosion at the base of the post



This is confidential information and is not to be duplicated or published without the permission of East Penn Manufacturing Co.



Battery Corrosion Protection Kit

Battery Corrosion Protection

Clean your battery connections and install corrosion protection pads. Then apply corrosion preventative spray after reconnecting the terminals. These simple steps can help prevent battery corrosion.



O'Reilly's Part #01342

Protection Kit Includes:

- ✓ Battery Cleaner Spray
- ✓ Battery Terminal Protection Spray
- ✓ Terminal Protection pads
- ✓ Terminal Cleaning Brush
- ✓ Hand cleaning wipes

Terminal corrosion at the post



This is confidential information and is not to be duplicated or published without the permission of East Penn Manufacturing Co.

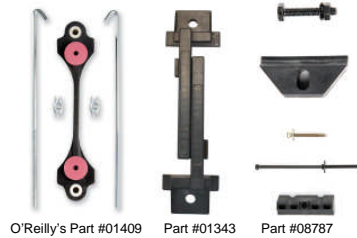


Battery Hold-Down Accessories

Battery Installation Hardware

The job isn't finished once a new battery has been installed.

You have to make sure that the battery hold down and the fastening hardware is up to the task. Corroded hardware components can become weak and fail over time.



O'Reilly's Part #01409 Part #01343 Part #08787

Don't Forget to Suggest

- ✓ Battery Cleaner Spray
- ✓ Battery Terminal Protection Spray
- ✓ Terminal Protection pads



This is confidential information and is not to be duplicated or published without the permission of East Penn Manufacturing Co.



Terminal Repair Splice Kits

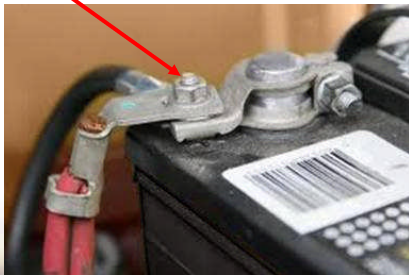
The evolution of the automobile has brought about an increased use of electrical and electronic content that has resulted in the wire harness design becoming more and more complex.

O'Reilly's Part #08859 Part #08863 Part #08864 Part #08865



O'Reilly's Part #08866 Part #08867 Part #08868 Part #08869

Terminal repair splice kit – repair solution



This is confidential information and is not to be duplicated or published without the permission of East Penn Manufacturing Co.



Terminal Splice Repair Kits - continued

Battery Splice Kit

The majority of vehicles manufactured after the model year of 2000 have complex harnesses which are difficult and expensive to replace. A battery splice kit can replace a corroded or damaged battery cable or terminal end easier with a much lower cost.



O'Reilly's Part #08865

O'Reilly's Has the Solution

Newly developed training job-aid on how to install a Cable Splice Repair Kit.

- ✓ This approach offers a practical solution to what is often thought of as a complex installation
- ✓ This practical alternative to replacing a sub-assembly of a vehicle electrical harness.

This is confidential information and is not to be duplicated or published without the permission of East Penn Manufacturing Co.



Terminal Splice Repair Kits - continued

STEPS TO INSTALLING A BATTERY HARNESS REPAIR SPLICE

BATTERIES PRODUCE EXPLOSIVE GASES. FOLLOW ALL SAFETY INSTRUCTIONS. ALWAYS WEAR SAFETY GLASSES WHEN WORKING NEAR BATTERIES.

1. Turn off all electrical loads on vehicle. Set parking brake. Place automatic transmissions in "PARK" (manual transmissions in "NEUTRAL").

NOTE: Before proceeding, consult your owner's manual or service specialist to determine if special procedures are required before disconnecting your battery.

2. Locate and disconnect ground cable from the battery. The ground cable is the cable wired to the engine block, vehicle frame or other metallic ground.

3. Disconnect other cable from the battery. This cable is the one wired to the starter or solenoid.

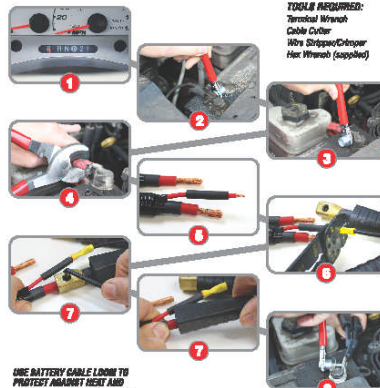
4. Remove old terminal that is to be replaced by cutting off the wires attached to it. Cut the wires as close as possible to the old terminal.

5. Strip insulation from remaining auxiliary lead 1/4" and remaining main cable(s) 3/4".

6. Insert the stripped end of auxiliary lead into appropriate built splice and crimp using an appropriate tool. Repeat if there are additional auxiliary leads.

7. Insert stripped end of main cable into splice connector; tighten locking hex screw with supplied hex wrench and slide insulator sheath over splice connection. Repeat if additional main cable.

8. Reconnect battery cables to battery in reverse sequence of steps 2 and 3, connecting the battery cable wired to starter or solenoid first and the ground cable last. Properly position and tighten terminals on battery posts.



TOOLS REQUIRED:
Terminal Wrench
Cable Crimper
Wire Strippers/Cutter
Hex Wrench (supplied)

USE BATTERY CABLE LEADS TO PROTECT AGAINST HEAT AND AIRBORNE WATERS NECESSARY.

NOTE: The positive cable may have a fusible link auxiliary lead (not included). If it is burned out, it must be replaced in addition to installing the new cable.

Part No. 0886 7875
©2009 East Penn Manufacturing Co., LLC

This is confidential information and is not to be duplicated or published without the permission of East Penn Manufacturing Co.



Booster Cables

The Quality

- ✓ The 2ga./20ft., 4ga./20ft. & 6ga./16ft. sets are equipped with heavy-duty color-coded clamps with thick vinyl coating for rust and corrosion protection.
- ✓ Jaw designed for top & side terminals.
- ✓ Meets or exceeds SAE requirements.

The Design

- ✓ Tough PVC insulation, tangle-free dual cable construction.
- ✓ The clamps provide easy attachment on hard to reach side, top post and remote battery access terminals makes these sets some of the finest booster cables in the industry.



Battery Booster Cables...Who needs tem?

Not every consumer has an Auto Club membership... So when the opportunity arises and their vehicle won't start, it is important to have a complete assortment of Booster Cables.

Battery Terminal Protection from Corrosion

Terminal Protectors

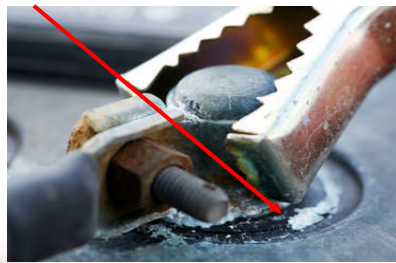
As vehicle owners hold onto their cars longer, and electrical systems are continuing to evolve with greater complexity, *prevention of battery corrosion at the terminal connection is key.*

Corrosion free terminals allow the vehicle engine management systems to perform as they were intended.



O'Reilly's Part #01396

Terminal corrosion at the base of the post



This is confidential information and is not to be duplicated or published without the permission of East Penn Manufacturing Co.



Battery Corrosion Protection Kit

Battery Corrosion Protection

Clean your battery connections and install corrosion protection pads. Then apply corrosion preventative spray after reconnecting the terminals. These simple steps can help prevent battery corrosion.



O'Reilly's Part #01342

Protection Kit Includes:

- ✓ Battery Cleaner Spray
- ✓ Battery Terminal Protection Spray
- ✓ Terminal Protection pads
- ✓ Terminal Cleaning Brush
- ✓ Hand cleaning wipes

Terminal corrosion at the post



This is confidential information and is not to be duplicated or published without the permission of East Penn Manufacturing Co.

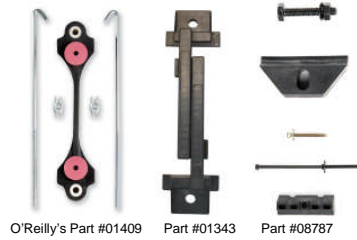


Battery Hold-Down Accessories

Battery Installation Hardware

The job isn't finished once a new battery has been installed.

You have to make sure that the battery hold down and the fastening hardware is up to the task. Corroded hardware components can become weak and fail over time.



O'Reilly's Part #01409 Part #01343 Part #08787

Don't Forget to Suggest

- ✓ Battery Cleaner Spray
- ✓ Battery Terminal Protection Spray
- ✓ Terminal Protection pads



This is confidential information and is not to be duplicated or published without the permission of East Penn Manufacturing Co.



Terminal Repair Splice Kits

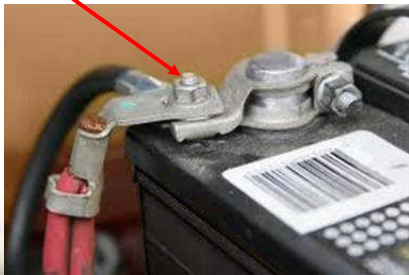
The evolution of the automobile has brought about an increased use of electrical and electronic content that has resulted in the wire harness design becoming more and more complex.

O'Reilly's Part #08859 Part #08863 Part #08864 Part #08865



O'Reilly's Part #08866 Part #08867 Part #08868 Part #08869

Terminal repair splice kit – repair solution



This is confidential information and is not to be duplicated or published without the permission of East Penn Manufacturing Co.



Terminal Splice Repair Kits - continued

Battery Splice Kit

The majority of vehicles manufactured after the model year of 2000 have complex harnesses which are difficult and expensive to replace. A battery splice kit can replace a corroded or damaged battery cable or terminal end easier with a much lower cost.



O'Reilly's Part #08865

O'Reilly's Has the Solution

Newly developed training job-aid on how to install a Cable Splice Repair Kit.

- ✓ This approach offers a practical solution to what is often thought of as a complex installation
- ✓ This practical alternative to replacing a sub-assembly of a vehicle electrical harness.

This is confidential information and is not to be duplicated or published without the permission of East Penn Manufacturing Co.



Terminal Splice Repair Kits - continued

STEPS TO INSTALLING A BATTERY HARNESS REPAIR SPLICE

BATTERIES PRODUCE EXPLOSIVE GASES. FOLLOW ALL SAFETY INSTRUCTIONS. ALWAYS WEAR SAFETY GLASSES WHEN WORKING NEAR BATTERIES.

1. Turn off all electrical loads on vehicle. Set parking brake. Place automatic transmissions in "PARK" (manual transmissions in "NEUTRAL").

NOTE: Before proceeding, consult your owner's manual or service specialist to determine if special procedures are required before disconnecting your battery.

2. Locate and disconnect ground cable from the battery. The ground cable is the cable wired to the engine block, vehicle frame or other metallic ground.

3. Disconnect other cable from the battery. This cable is the one wired to the starter or solenoid.

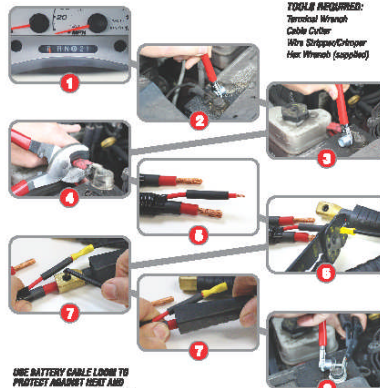
4. Remove old terminal that is to be replaced by cutting off the wires attached to it. Cut the wires as close as possible to the old terminal.

5. Strip insulation from remaining auxiliary lead 1/4" and remaining main cable(s) 3/4".

6. Insert the stripped end of auxiliary lead into appropriate built splice and crimp using an appropriate tool. Repeat if there are additional auxiliary leads.

7. Insert stripped end of main cable into splice connector, tighten locking hex screw with supplied hex wrench and slide insulator sheath over splice connection. Repeat if additional main cable.

8. Reconnect battery cables to battery in reverse sequence of steps 2 and 3, connecting the battery cable wired to starter or solenoid first and the ground cable last. Properly position and tighten terminals on battery posts.



TOOLS REQUIRED:
Terminal Wrench
Cable Crimper
Wire Stripper/Cutter
Hex Wrench (supplied)

USE BATTERY CABLE LEADS TO PROTECT AGAINST HEAT AND AIRBORNE WIRE INSULATION.

NOTE: The positive cable may have a flexible (ink auxiliary lead type included). If it is burned out, it must be replaced in addition to installing the new cable.

Part No. 0886 7875
©2009 O'Reilly, Portland, U.S.A.

This is confidential information and is not to be duplicated or published without the permission of East Penn Manufacturing Co.



Booster Cables

The Quality

- ✓ The 2ga./20ft., 4ga./20ft. & 6ga./16ft. sets are equipped with heavy-duty color-coded clamps with thick vinyl coating for rust and corrosion protection.
- ✓ Jaw designed for top & side terminals.
- ✓ Meets or exceeds SAE requirements.

The Design

- ✓ Tough PVC insulation, tangle-free dual cable construction.
- ✓ The clamps provide easy attachment on hard to reach side, top post and remote battery access terminals makes these sets some of the finest booster cables in the industry.



Battery Booster Cables...Who needs tem?

Not every consumer has an Auto Club membership... So when the opportunity arises and their vehicle won't start, it is important to have a complete assortment of Booster Cables.

This is confidential information and is not to be duplicated or published without the permission of East Penn Manufacturing Co.

