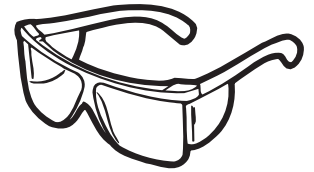


ALWAYS WEAR EYE PROTECTION WHEN WORKING AROUND BATTERIES!



Basic Rules for Battery Care & Maintenance



SAFETY PRECAUTIONS

⚠ DANGER/POISON

SHIELD EYES. EXPLOSIVE GASES CAN CAUSE BLINDNESS OR INJURY.	NO • SPARKS • FLAMES • SMOKING	SULFURIC ACID CAN CAUSE BLINDNESS OR SEVERE BURNS.	FLUSH EYES IMMEDIATELY WITH WATER. GET MEDICAL HELP FAST.
KEEP OUT OF THE REACH OF CHILDREN.	READ ALL INSTRUCTIONS.	DO NOT TIP. KEEP VENT CAPS TIGHT & LEVEL.	

WARNING: RISK OF FIRE, EXPLOSION OR BURNS. DO NOT DISASSEMBLE OR INCINERATE. NOT RECOMMENDED FOR INVERTED USE. FOLLOW PROPER CHARGING INSTRUCTIONS.

PROPOSITION 65 WARNING: battery posts, terminals and related accessories contain lead and lead compounds, chemicals known to the State of California to cause cancer and reproductive harm. Batteries also contain other chemicals known to the State of California to cause cancer. **WASH HANDS AFTER HANDLING**

Warning: Follow all safety instructions when handling batteries! Always wear safety glasses and a face shield when working on or near batteries.

All batteries generate explosive hydrogen gas. Keep sparks, flames and cigarettes away from batteries at all times. Do not connect or disconnect "live" circuits. To avoid creating sparks, always turn charging and testing equipment off before attaching or removing clamps.

ALWAYS DISCONNECT GROUNDED CABLE FIRST AND CONNECT IT LAST TO PREVENT DANGEROUS SPARKS.

Perform all work in a well ventilated area. Never lean directly over a battery while boosting, testing or charging it. **PROTECT YOUR EYES!**

Batteries contain corrosive sulfuric acid that can destroy clothing and burn the skin. Neutralize acid spills with a paste made of baking soda and water or large quantities of water. **BE CAREFUL!**

IN-VEHICLE SERVICE AND TESTING

Follow safety precautions: **WEAR PROPER EYE PROTECTION!**

Prior to any testing, visually inspect the battery. Look for:

- Cracked or broken case or cover
- Loose cable connections
- Leaking case-to-cover seal
- Corrosion
- Damaged or leaking terminals

Neutralize any corrosion with a baking soda/water paste or battery cleaner spray. Scrape or brush off the residue and wash the area with clean water. Following your visual inspection, check the battery's state of charge with a voltmeter.

You must boost charge a weak battery before load testing. (See charging chart under "Charging Tips" section.) If fully charged, perform a load test. **PROTECT YOUR EYES!**

LOAD TESTING

Follow safety precautions:
WEAR PROPER EYE PROTECTION!

First perform an open circuit voltage test, then an adjustable load test. A load test is the best way to determine if the battery is delivering adequate electrical performance. Make sure your variable load tester is working properly. When testing AGM batteries, make sure the tester has an AGM setting.

- ❶ You can't load test a discharged battery. If the voltage is below 12.4, be sure to completely charge it before continuing. Refer to the charging chart under "Charging Tips" section for important information.
- ❷ To avoid sparking and explosive gasses, be sure load tester is OFF and battery is disconnected before hook-up. Use computer memory saver to retain the vehicle's electronic memory while the battery is disconnected.
- ❸ Connect the positive (+) tester clamp to the positive (+) battery terminal. Then connect the negative (-) tester clamp to the negative (-) battery terminal. Always protect your eyes.
- ❹ Set the tester for one-half the battery's 0°F cold crank rating and apply the load for 15 seconds. (If the CCA rating is unknown, use 1/2 of the minimum O.E. battery CCA requirement of the vehicle.)
- ❺ Estimate the internal temperature of the battery to the nearest 10°F. Apply the load for 15 seconds. Note the voltage at 15 seconds with the load on and immediately shut the load off. A reading at least equal to the value from the chart below indicates a good battery.

BATTERY TEMP.	12-VOLT BATTERY	6-VOLT BATTERY
70°F (21°C) or above	9.60	4.80
60°F (16°C)	9.50	4.75
50°F (10°C)	9.40	4.70
40°F (4°C)	9.30	4.65
30°F (-1°C)	9.10	4.55
20°F (-6°C)	8.90	4.45
10°F (-12°C)	8.70	4.35
0°F (-18°C)	8.50	4.25

- ❻ If the battery did not meet the required voltage and if it was not charged in Step 1, completely recharge the battery and repeat the test. If it still fails to meet requirements, replace the battery.

ALWAYS WEAR EYE PROTECTION WHEN WORKING AROUND BATTERIES!

CONDUCTANCE TESTING

Follow safety precautions:
WEAR PROPER EYE PROTECTION!

Conductance uses the battery's response to a very small signal in an attempt to predict the effects of a much larger current. Conductance testing is ineffective on a discharged battery. If the battery is known to be discharged or if the tester tells the operator to charge before testing again, the battery must be completely recharged.

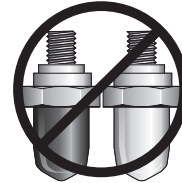
- ❶ It may not be required to turn a conductance tester off or on. If off, you must turn on immediately when connected to a battery. Most will turn off automatically if ignored long enough. Some have no battery of their own and get all their power from the battery being tested.
- ❷ Connect the positive (+) tester clamp to the positive (+) battery terminal. Then connect the negative (-) tester clamp to the negative (-) battery terminal. If the battery has more than one pair of terminals (e.g. top posts and side terminals) always perform the testing on the terminals that are used in the vehicle. Use the proper charging adapters for stud or side terminal batteries. Never connect tester to a bolt or stud.
- ❸ Turn on if needed. Enter the requested information. Be sure to distinguish between a CCA rating and a CA or MCA rating. If no rating is available, use the minimum O.E. battery CCA requirement of the vehicle.
- ❹ If the tester says to replace a battery that was tested in the vehicle, repeat the testing after removing the cables and cleaning the posts.

CHARGING TIPS (continued)

- ✓ Prior to charging, read the manufacturer's instructions for proper charger hook-up and use.
- ✓ Turn charger off prior to hook-up to avoid dangerous sparks. **PROTECT YOUR EYES!**
- ✓ **Warning:** If the electrolyte is accessible, verify that plates are covered before beginning to charge. At the end of charge, add distilled water as needed to bring levels to the proper height. If water is added, charge for an additional 30 minutes to mix. If electrolyte levels are low, but battery is not accessible, remove battery from service.
- ✓ The maximum charge rate in amperes should be no more than 1/3 of the battery's reserve capacity minute rating. If the terminal voltage exceeds 16.0 volts while charging, reduce the charge rate.
- ✓ Continue charging and reduce the rate as needed until a two-hour period results in no increase in voltage or decrease in current.
- ✓ If violent gassing or spewing of electrolyte occurs, or the battery case feels hot to the touch, temporarily reduce or halt charging.



Battery Bolts



Bolt Extenders

DO NOT USE Battery Bolt Extenders or Battery Bolts for testing or charging batteries. They do not provide the necessary lead-to-lead contact, and can reduce your cold cranking amperage (CCA) and state of charge readings. Batteries should be boost charged if the open circuit voltage (voltmeter) reading is below 12.4 volts.

See charging chart below.

VOLTAGE			STATE OF CHARGE	APPROX. BATTERY CHARGING TIME * TO FULL CHARGE AT 80°F/27°C				
FLOODED		AGM		CHARGER MAXIMUM RATE				
6 Volt	12 Volt	12 Volt		50 Amps	30 Amps	20 Amps	10 Amps	2 Amps
6.3	12.6	12.8 V	100%	— FULL CHARGE —				
6.2	12.4	12.6 V	75%	20 min.	35 min.	48 min.	90 min.	7.5 hrs.
6.1	12.2	12.3 V	50%	45 min.	75 min.	95 min.	180 min.	15 hrs.
6.0	12.0	12.0 V	25%	65 min.	115 min.	145 min.	280 min.	22.5 hrs.
5.9	11.8	11.8 V	0%	85 min.	150 min.	195 min.	370 min.	30 hrs.

AGM 12-VOLT BATTERY CHARGING CONSIDERATIONS:

Not all chargers are really AGM compatible and can do significant damage to an AGM battery. Large "wheeled chargers," found in many shops, which exceed 15.4 volts must be avoided. In the rare occurrence that an AGM battery needs to be charged outside of the vehicle's charging system, charging voltage should be 13.8 – 14.8 @ 77°F (25°C). Not to exceed 30 AMPS.

IMPORTANT: NEVER OVERCHARGE BATTERIES! EXCESSIVE CHARGING WILL SHORTEN BATTERY LIFE.

* Charging time depends upon battery age, temperature, capacity, and efficiency of charger.

CHARGING TIPS

Follow safety precautions:
WEAR PROPER EYE PROTECTION!

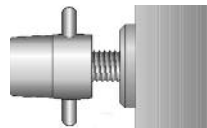
- ✓ To avoid a battery explosion, never attempt to charge a frozen battery. Allow it to warm up to room temperature before placing on charge.
- ✓ **Warning:** Gel and AGM (Absorbed Glass Mat) batteries require a voltage-limited charger. Charging a Gel or AGM battery on a typical shop charger that exceeds 15.4 volts – even one time – may greatly shorten its life.
- ✓ **Important:** Never overcharge batteries. Excessive charging will shorten battery life.



SIDE TERMINAL CHARGING POST



SIDE TERMINAL CHARGING POST WITH EARS



FULLY TIGHTEN FOR COMPLETE LEAD-TO-LEAD CONTACT

Side Terminal Charging Posts should be used to ensure the best testing and charging results for side terminal batteries. The charging posts will provide a flush lead-to-lead contact. Be sure to tighten the charging post until it is snug and secure. This will allow a strong current to pass from the charging post to the battery terminal.

ALWAYS WEAR EYE PROTECTION WHEN WORKING AROUND BATTERIES!

ROTATE BATTERY STOCK

Use oldest batteries *first*. Batteries require periodic stock rotation and routine charging. Always rotate stock using the *FIFO (First In, First Out)* method...NOT *FISH (First In, Still Here)*.

Always use oldest batteries first.

**REMEMBER...WET OR DRY,
ALWAYS ROTATE YOUR STOCK!**

Battery Code Date Chart

Effective for Battery Shipments
as of 1/2017

	Jan	Feb	Mar	Apr	May	Jun	Jul	Aug	Sep	Oct	Nov	Dec
2017	1/17	2/17	3/17	4/17	5/17	6/17	7/17	8/17	9/17	10/17	11/17	12/17
2018	1/18	2/18	3/18	4/18	5/18	6/18	7/18	8/18	9/18	10/18	11/18	12/18
2019	1/19	2/19	3/19	4/19	5/19	6/19	7/19	8/19	9/19	10/19	11/19	12/19
2020	1/20	2/20	3/20	4/20	5/20	6/20	7/20	8/20	9/20	10/20	11/20	12/20
2021	1/21	2/21	3/21	4/21	5/21	6/21	7/21	8/21	9/21	10/21	11/21	12/21
2022	1/22	2/22	3/22	4/22	5/22	6/22	7/22	8/22	9/22	10/22	11/22	12/22
2023	1/23	2/23	3/23	4/23	5/23	6/23	7/23	8/23	9/23	10/23	11/23	12/23
2024	1/24	2/24	3/24	4/24	5/24	6/24	7/24	8/24	9/24	10/24	11/24	12/24
2025	1/25	2/25	3/25	4/25	5/25	6/25	7/25	8/25	9/25	10/25	11/25	12/25
2026	1/26	2/26	3/26	4/26	5/26	6/26	7/26	8/26	9/26	10/26	11/26	12/26
2027	1/27	2/27	3/27	4/27	5/27	6/27	7/27	8/27	9/27	10/27	11/27	12/27
2028	1/28	2/28	3/28	4/28	5/28	6/28	7/28	8/28	9/28	10/28	11/28	12/28
2029	1/29	2/29	3/29	4/29	5/29	6/29	7/29	8/29	9/29	10/29	11/29	12/29
2030	1/30	2/30	3/30	4/30	5/30	6/30	7/30	8/30	9/30	10/30	11/30	12/30
2031	1/31	2/31	3/31	4/31	5/31	6/31	7/31	8/31	9/31	10/31	11/31	12/31

E.P.M. Form #2308 12/16

© 2016 by EPM

BATTERY STORAGE TIPS

Batteries should be stored in a cool, dry area in an upright position. Never stack batteries directly on top of each other unless they're in cartons. Do not stack more than 3 high (2 high if battery type is heavy commercial).

Test wet batteries every 4–6 months and recharge if necessary. Always test and charge if necessary before installation.

(See "Charging Tips" sections.)

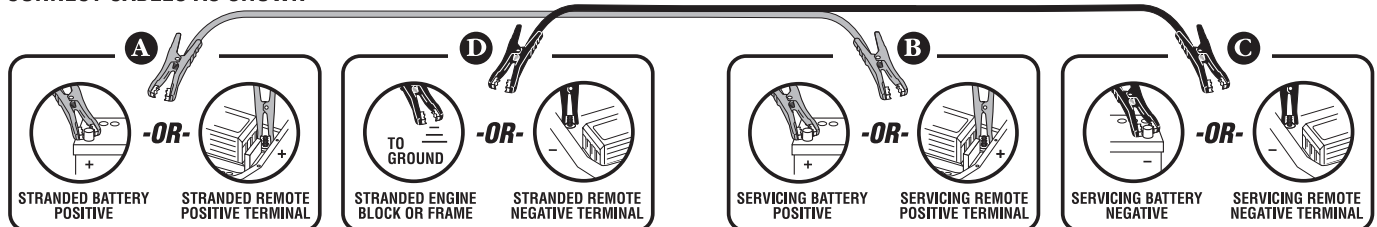
JUMP STARTING DIAGRAM

INSTRUCTIONS FOR SAFE USE OF BOOSTER CABLES

PRIOR TO JUMP-STARTING VEHICLE, REFER TO THE VEHICLE OWNER'S MANUAL TO DETERMINE THE TYPE OF CONFIGURATION (TRADITIONAL UNDER-HOOD BATTERY OR REMOTE ACCESS TERMINALS) AND FOR ADDITIONAL SPECIFIC INFORMATION.

1. The black cable and clamps are negative (–) and the contrasting color cable and clamps are positive (+).
2. Make certain vehicles are not touching and both ignition switches are in the "OFF" position.
3. Connect the positive (+) clamp to the positive (+) battery or remote access terminal [as applicable] of the stranded vehicle. (Fig. A In Illustration)
4. Connect the other positive (+) clamp to the positive (+) battery or remote access terminal [as applicable] of the servicing vehicle. (Fig. B In Illustration)
5. Connect the negative (–) clamp to the negative (–) battery or remote access terminal [as applicable] of the servicing vehicle. (Fig. C In Illustration)
6. If the stranded vehicle is a traditional under-hood battery configuration, make the final connection of the other negative (–) clamp to the engine block or frame. (Fig. D In Illustration)
7. If the stranded vehicle is a remote access terminal configuration, make the final connection of the other negative (–) clamp to the negative (–) remote access terminal. (Fig. D In Illustration)
8. Start the servicing vehicle and allow it to run for at least 30 seconds. Then, start the stranded vehicle and remove the booster cable in REVERSE order of the above connections.

CONNECT CABLES AS SHOWN





www.superstarbatteries.net

Form No. 0734 Rev 1/21
© 2021 Printed in U.S.A.



All data subject to change without notice.
No part of this document may be copied or reproduced, electronically
or mechanically, without written permission from the company.